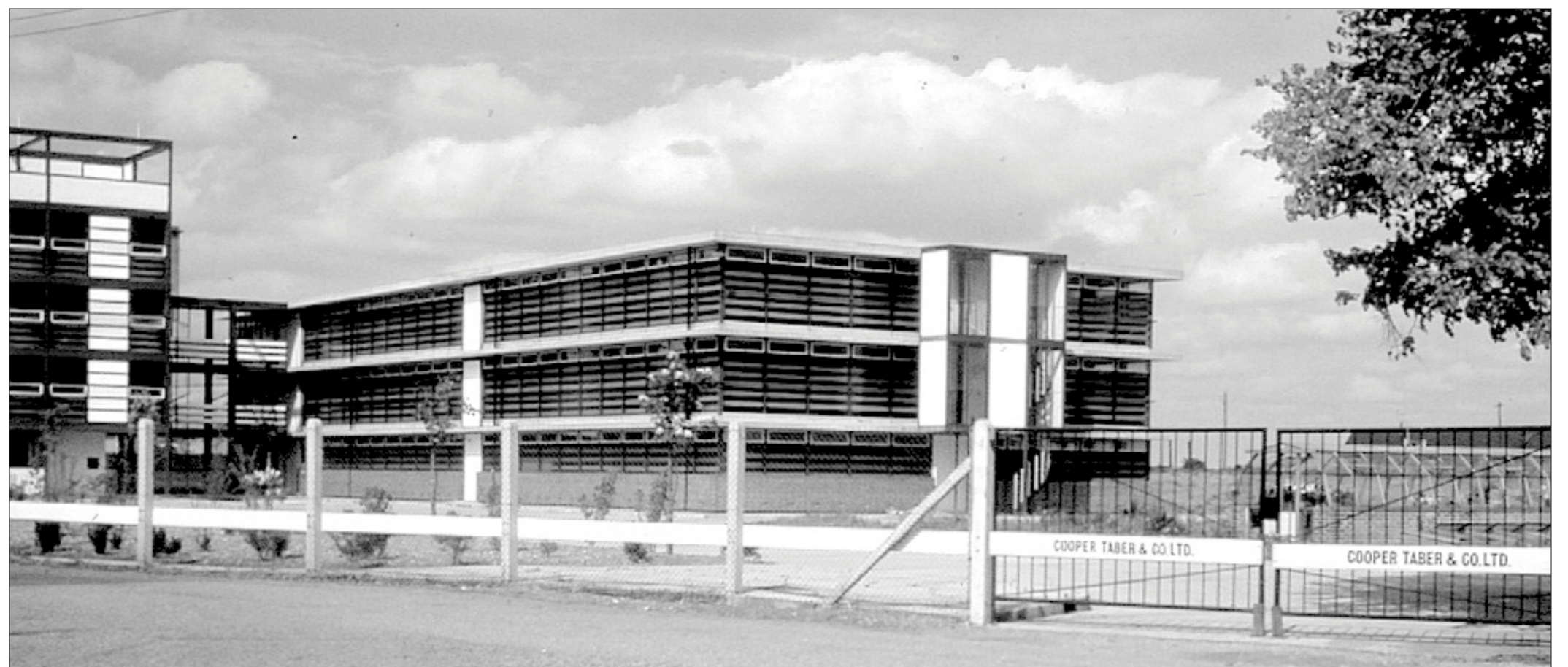
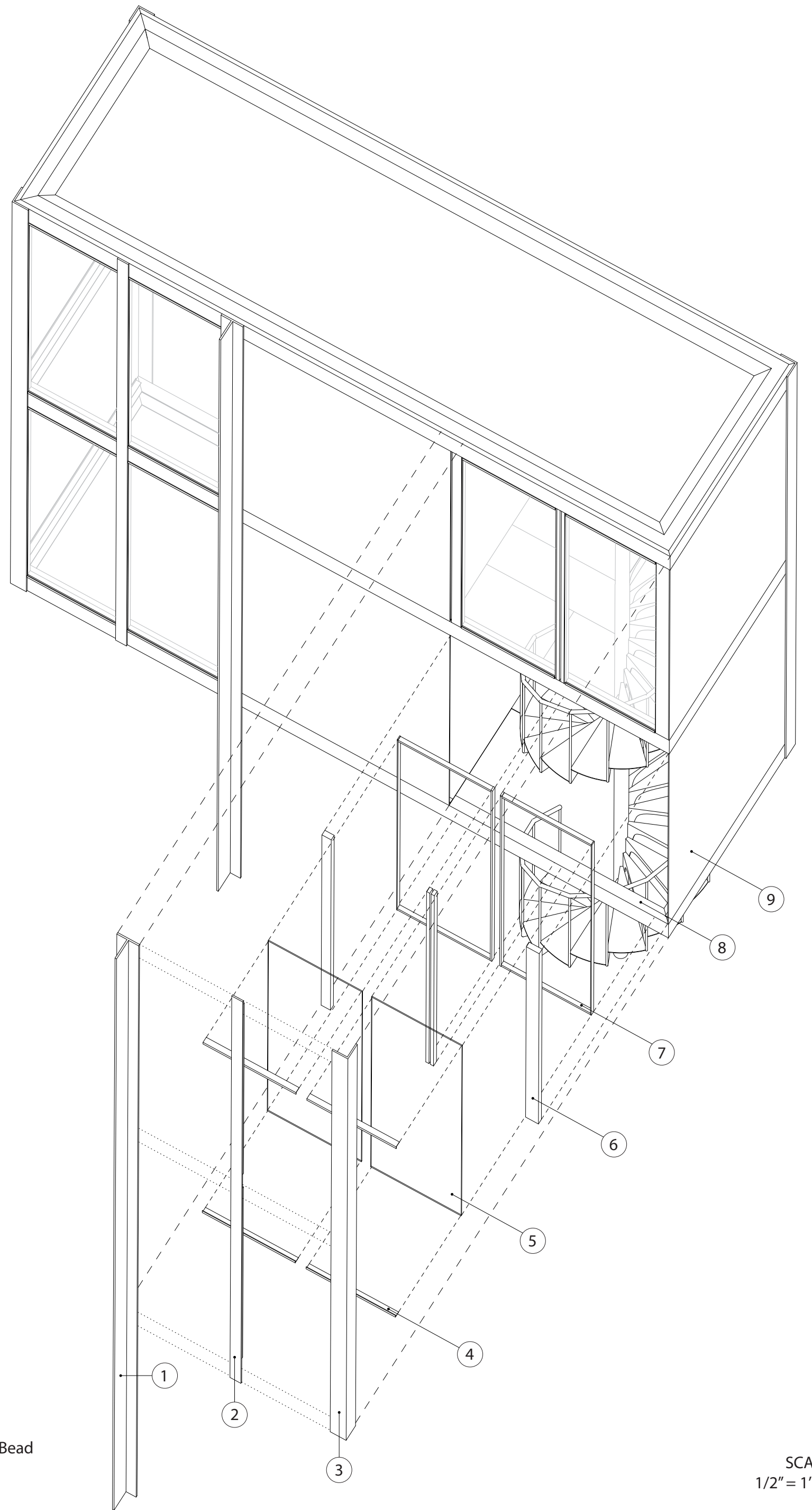
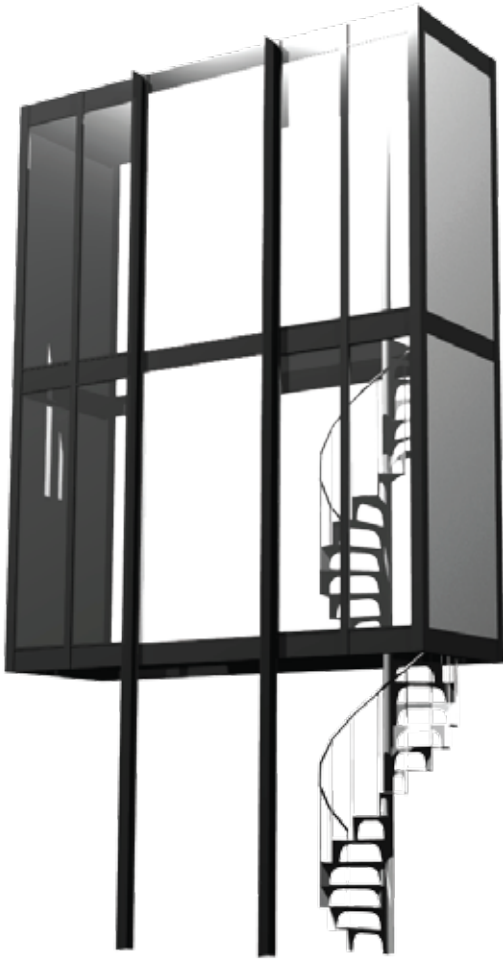
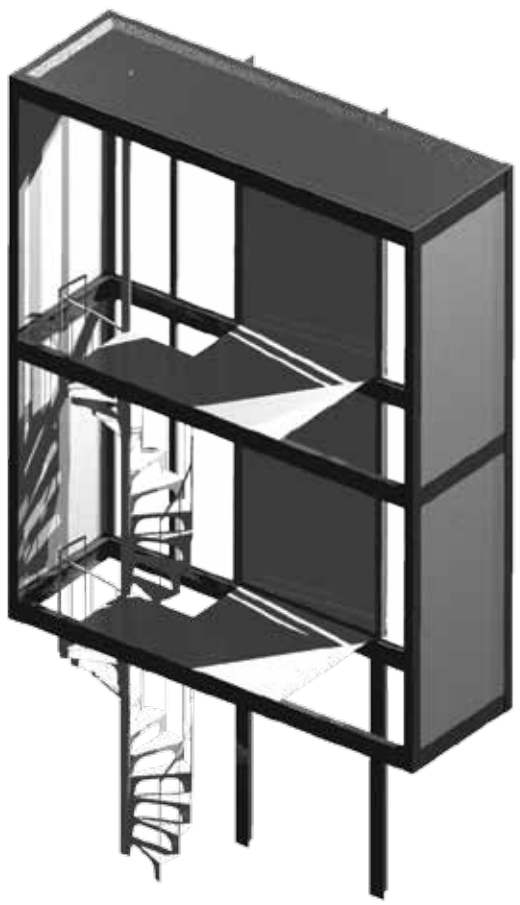


SCALE
1/2" = 1'-0"

SEED WAREHOUSE for COOPER TABER
CHAMBERLIN, POWELL, and BON
1956 (DEMOLISHED 1990)
DETAIL TYPE: ASSEMBLED AXON

DETAILING ARCHITECTURE
SPRING 2011
INSTRUCTOR: DAMIANI
DRAWING BY: RYAN T RALSTON





KEY:

- 1 6"x6"x7/16" Tee
- 2 3"x3"x3/8" Tee
- 3 4"x4"x3/8" Angle
- 4 1 1/2"x1"x1/8" Angle
- 5 32oz. Clear Glass
- 6 Hardwood Linings
- 7 1 3/32"x7/8" Hardwood Glazing Bead
- 8 8"x3" Channel
- 9 1/4" M.S. Chequer Plate

SCALE
1/2" = 1'-0"

SEED WAREHOUSE for COOPER TABER

CHAMBERLIN, POWELL, and BON

1956 (DEMOLISHED 1990)

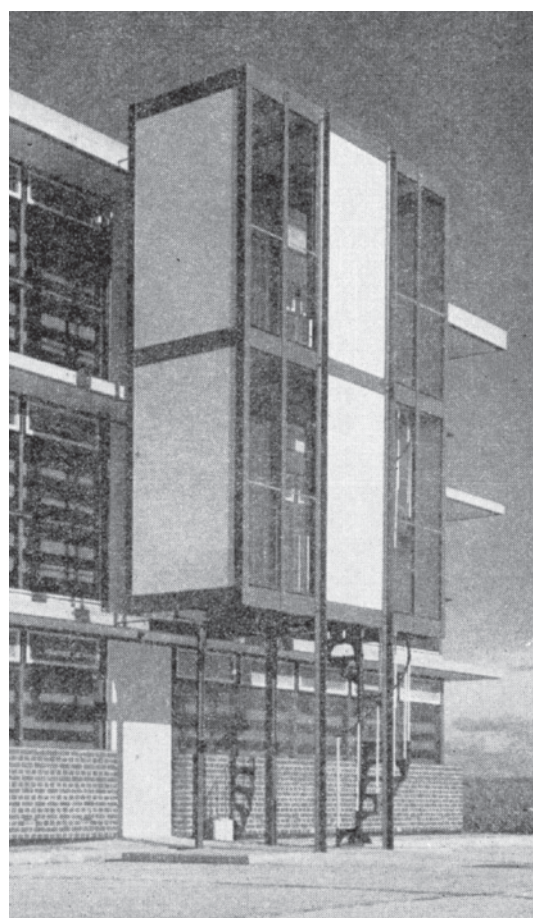
DETAIL TYPE: EXPLODED AXON

DETAILING ARCHITECTURE

SPRING 2011

INSTRUCTOR: DAMIANI

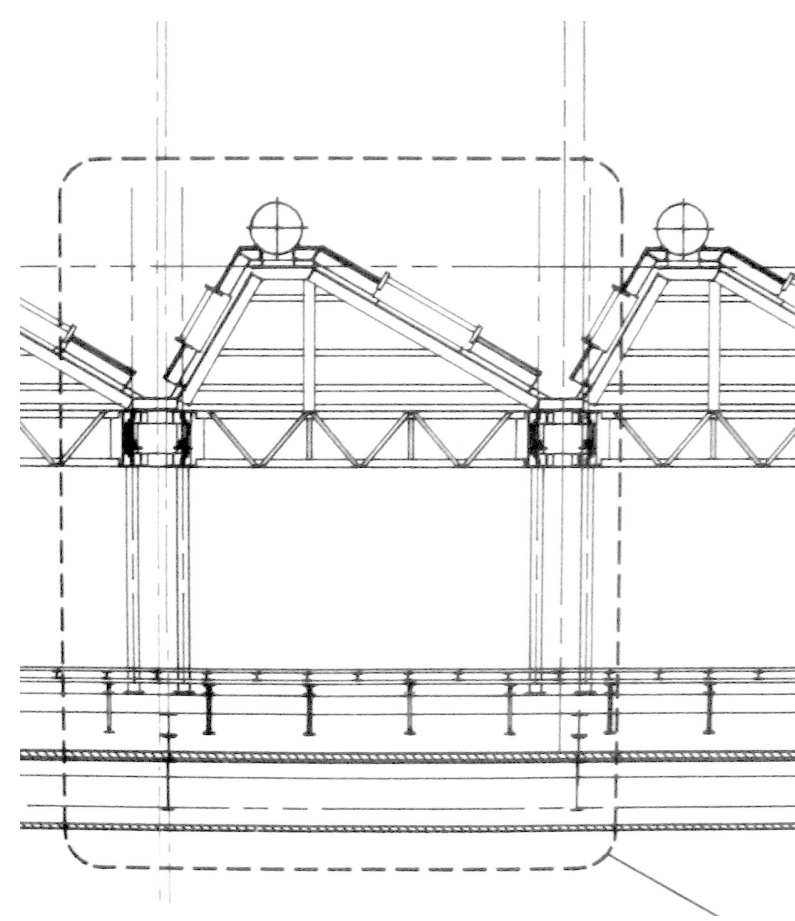
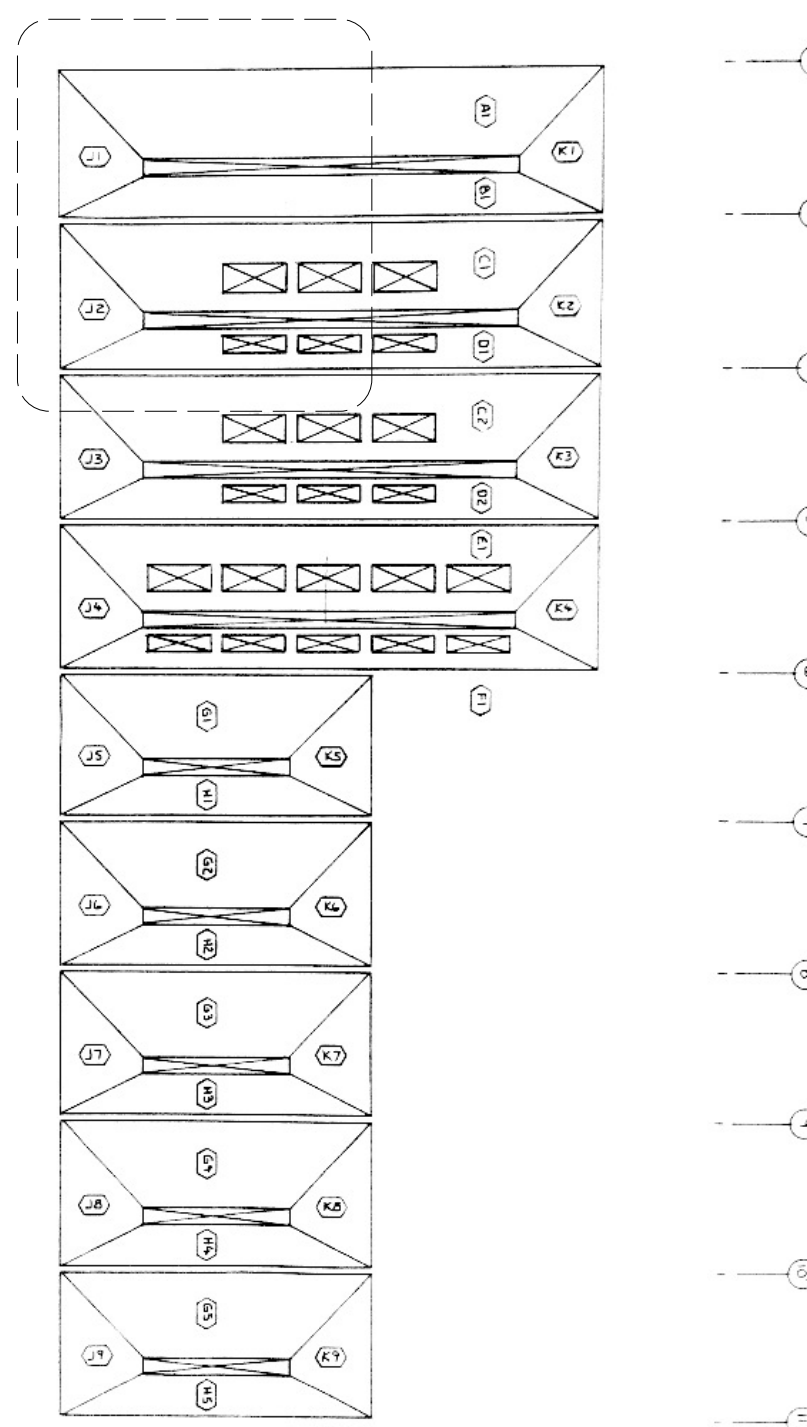
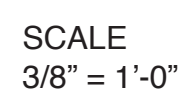
DRAWING BY: RYAN T RALSTON



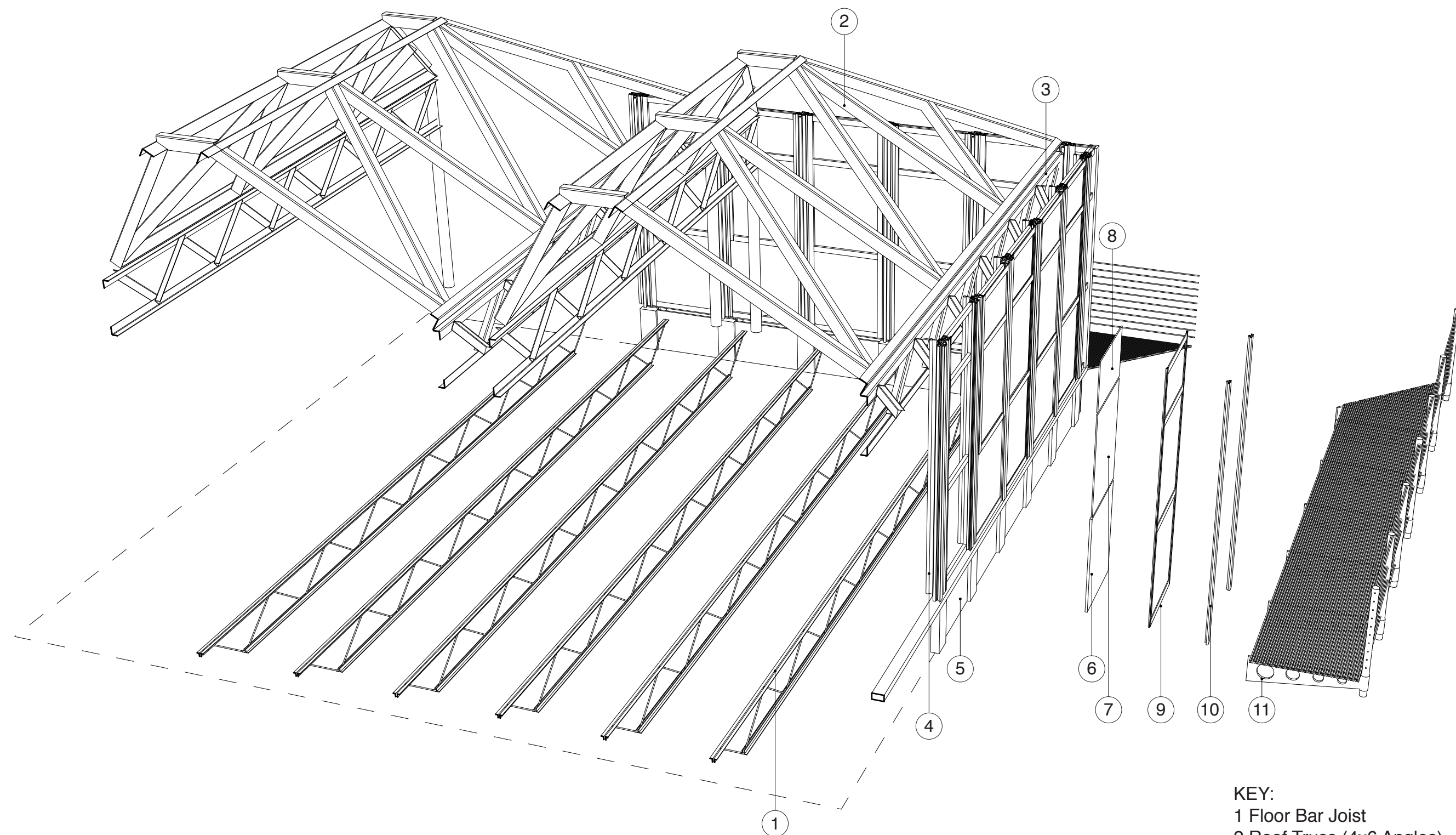
HISTORY OF THE BUILDING

Cooper Taber's new building, 1958. On the right is the rectangular seed warehouse block, and on the left the cubic office and processing area. It was completed in 1956, a striking contrast to most architecture of that date. As the local newspaper reported, it 'extensively incorporated the use of steel, concrete and glass'. One of its most visible aspects was the blue-green heat-resistant glass designed to maintain a cool temperature. A man-made lake alongside supplemented the water supply and enhanced the view. Ex-employees such as Miss Polly Wheaton recall that the building frequently let in the rain. However, the RIBA awarded it a Bronze medal as the best work in the eastern counties during the three years 1955-57. Although there were a large number of entries, the decision was unanimous. It was the first major work by Messrs Chamberlin, Powell and Bon, who had only become partners in 1952, and whose 'imagination and co-operation' were much praised. Mr Bon's cheery visits to Witham are still remembered here. He and his colleagues achieved many later successes, culminating in the Barbican Centre in London. Too new to be listed as of architectural or historic interest, the Witham building was demolished in about 1990. Its photograph appears from time to time in exhibitions of great post-war British architecture.

Janet Gyford (Images of England: Witham)

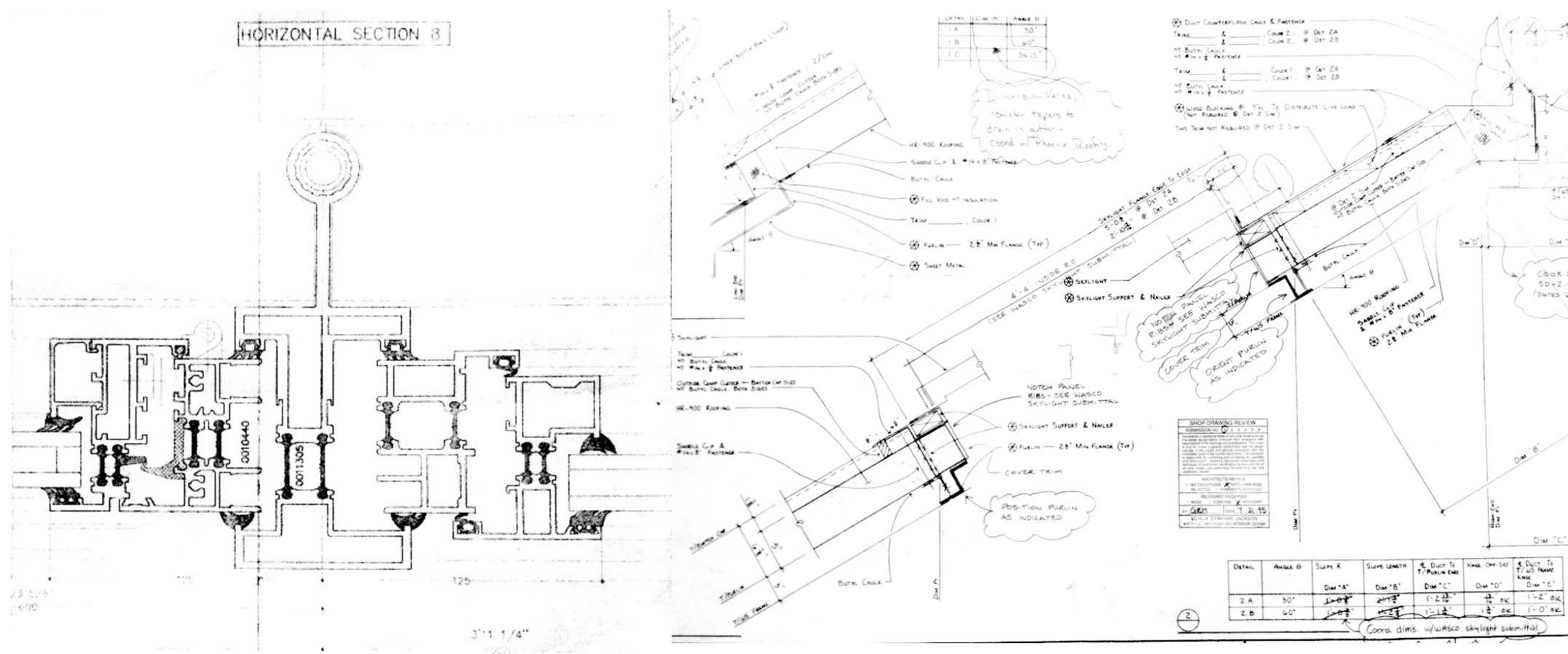


DRAWING BY: RYAN T RALSTON



SCALE
3/8" = 1'-0"

- KEY:
- 1 Floor Bar Joist
 - 2 Roof Truss (4x6 Angles)
 - 3 Roof Truss (3x4 Angles)
 - 4 Radiant Water Mullion
 - 5 Spandrel Panel (Solid)
 - 6 Kick Plate Panel (Solid)
 - 7 Viewing Field Panel (Glass)
 - 8 Transom Panel (Glass)
 - 9 Exterior Panel Frames
 - 10 Exterior Trim
 - 11 Exterior Balcony



INTELLIGENT WORKPLACE VOLKER HARTKOPF 1997 SECTIONAL PERSPECTIVE (EXPLODED)

DETAILING ARCHITECTURE

SPRING 2011

INSTRUCTOR: DAMIANI

DRAWING BY: RYAN T RALSTON